



TerraExplorer® Pro

Version 5.1.2 Release Notes

Information contained in this document is subject to change without notice and does not represent a commitment on behalf of Skyline Software Systems Inc. No part of this document may be reproduced or transmitted in any form or by any means, electronic or mechanical, including photocopying without the written permission of Skyline Software Systems Inc.

Copyright © 2009 Skyline Software Systems Inc. All rights reserved.

Skyline, SkylineGlobe, the Skyline logo, TerraExplorer, TerraExplorer Pro, TerraDeveloper, TerraBuilder, TerraGate, and the TerraExplorer Pro logo are trademarks of Skyline Software Systems Inc.

All other trademarks are the property of their respective holders.

Trademark names are used editorially, to the benefit of the trademark owner, with no intent to infringe on the trademark.

Protected by U. S. patents 7551172, 6111583, 6433792, 6496189, 6704017. Other patents pending.

4506 Daly Drive, Suite 100 Chantilly, VA 20151 USA

Tel: 703.378.3780 Fax: 703.378.3760

www.SkylineGlobe.com

Table of Contents

New KML loader	3
Enhancements to Time Mechanism	3
Support for latest OGC standards	4
Imagery layer improvements	4
DAE models	4
Improved performance.....	4
Support for 3DConnexion navigation device	5
Improved support for Multi-part feature layers	5
Tool improvements	5
System Requirements	5

New KML loader

- ◆ New KML loader is now integrated into TerraExplorer
- ◆ Asynchronous load for network links
- ◆ Supports Screen Overlay tag
- ◆ Supports Region tag
- ◆ Supports NetworkLink tag
 - onInterval
 - onStop
 - onRequest
 - onRegion
- ◆ Supports TimeSpan and TimeStamp tags
- ◆ Supports Style map

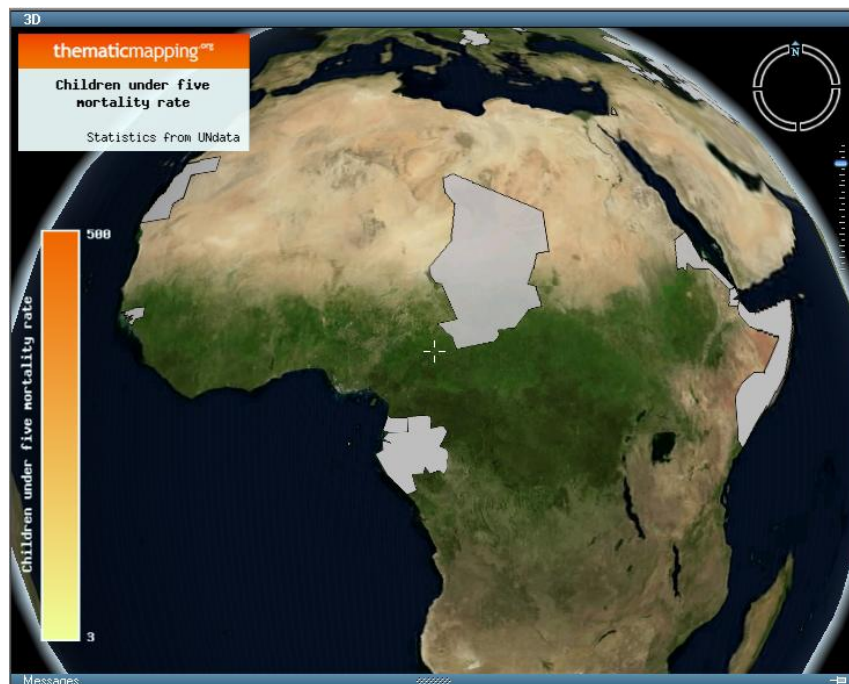


Figure 1: Screen Overlay

Enhancements to Time Mechanism

- ◆ Control the visibility of objects according to their start and end date and time
- ◆ New "Range" mode for the Date and Time slider
- ◆ Date and Time slider range can be automatically adjusted according to the objects' start and end TimeSpan or TimeStamp tags

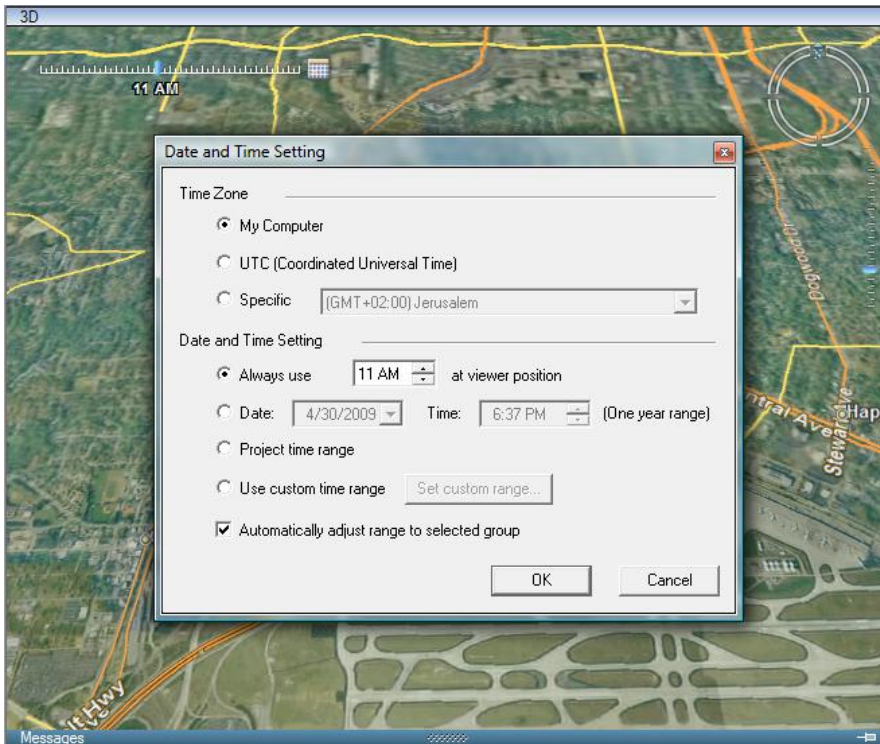


Figure 2: Date and Time settings

Support for latest OGC standards

- ◆ Imagery layer now supports OGC WMS service v1.3
- ◆ Feature layer now supports OGC WFS service v1.1

Imagery layer improvements

- ◆ Improved performance and stability for network layers

DAE models

- ◆ Officially supports Sketchup DAE models
- ◆ Improved loading time and memory usage for DAE models
- ◆ Support for Sketchup v7 models

Improved performance

- ◆ Improved KML loading time

- ◆ Improved Information Tree management

Support for 3DConnexion navigation device

- ◆ Navigate the 3D world using 3DConnexion SpaceNavigator™, SpaceExplorer™, SpaceTraveler™ and SpacePilot™



Improved support for Multi-part feature layers

- ◆ Faster processing of complex multi-part feature layers
- ◆ Enable complex multi-part feature layers in streaming mode

Tool improvements

- ◆ Redesigned Find Objects tool
- ◆ New Time Stamp tool

System Requirements

Operating System - Windows 98/2000/Me/XP/Vista

System Memory - 512MB RAM (1024MB or more recommended)

Video Card - 64MB of memory (128MB or more recommended)

Internet Connection - Broadband connection (recommended)

Browser - Microsoft Internet Explorer 6 or higher should be installed on machine