

Automated 3D Model Processing Comparison

Data: 5cm resolution images of Orlando, FL

Camera System: LeadAir Inc. 9 cam system

Resolution: 5 Cm

Comparison between:

Skyline PhotoMesh

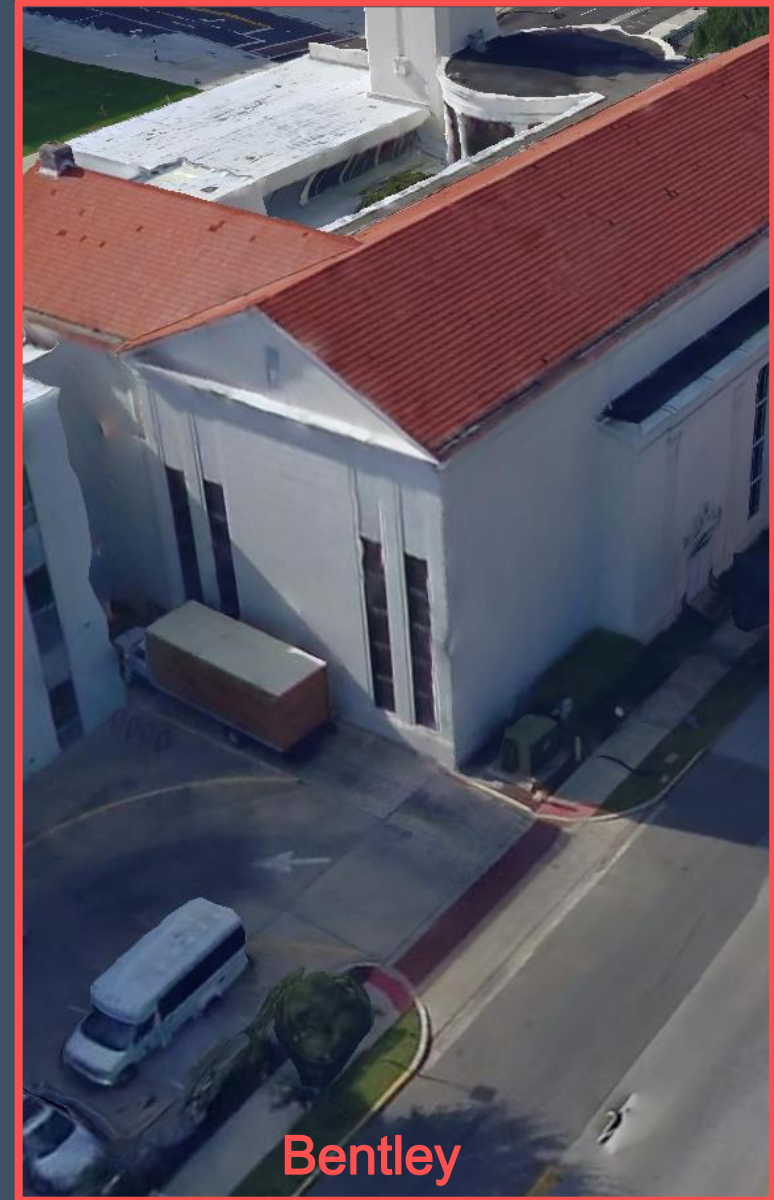
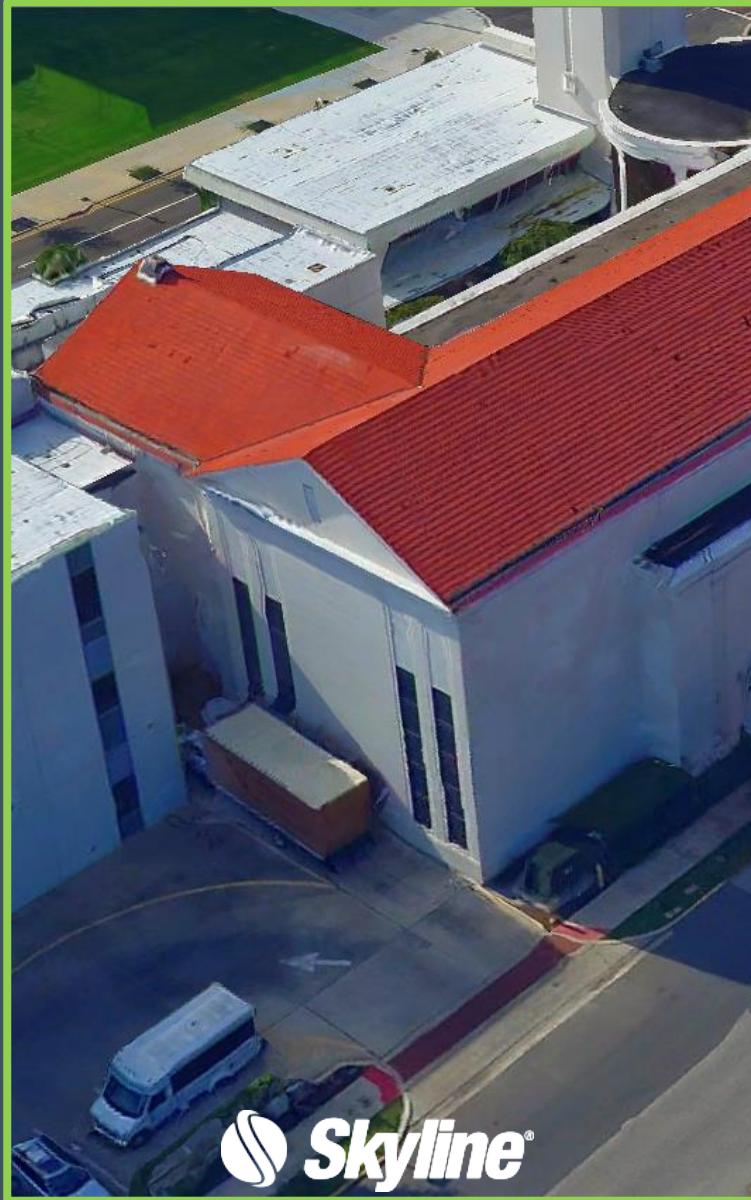
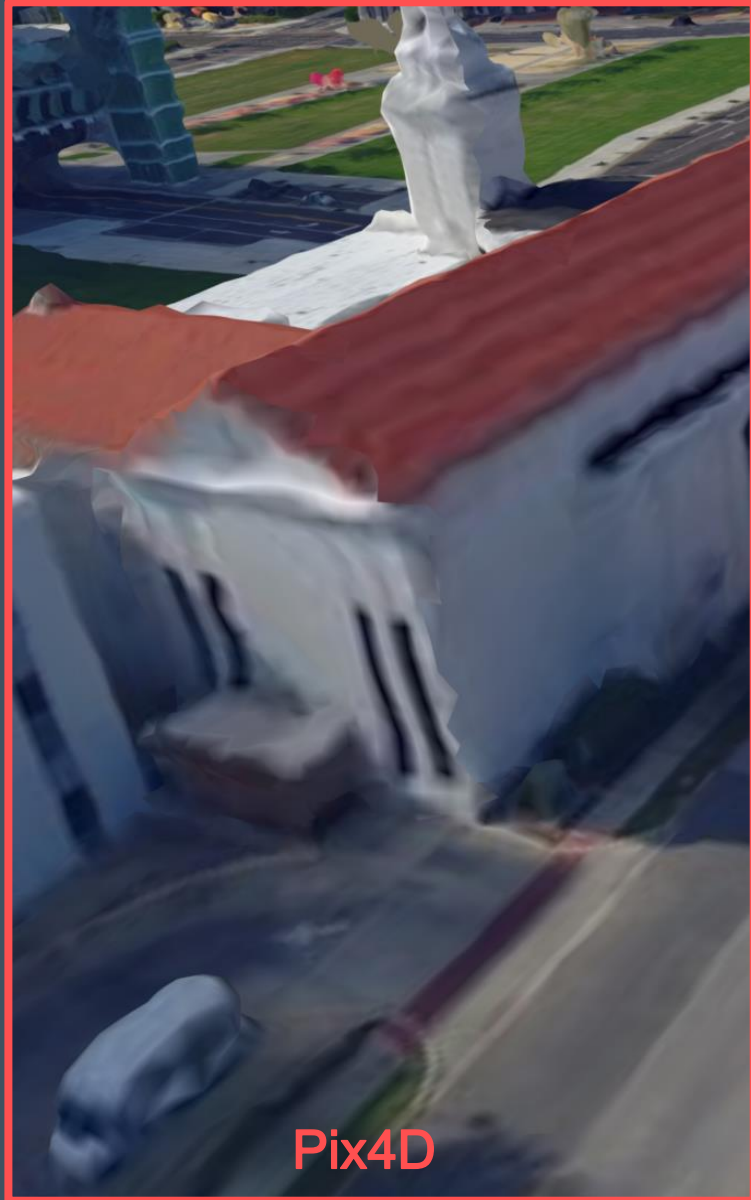
Bentley ContextCapture (Acute3D)

Pix4d

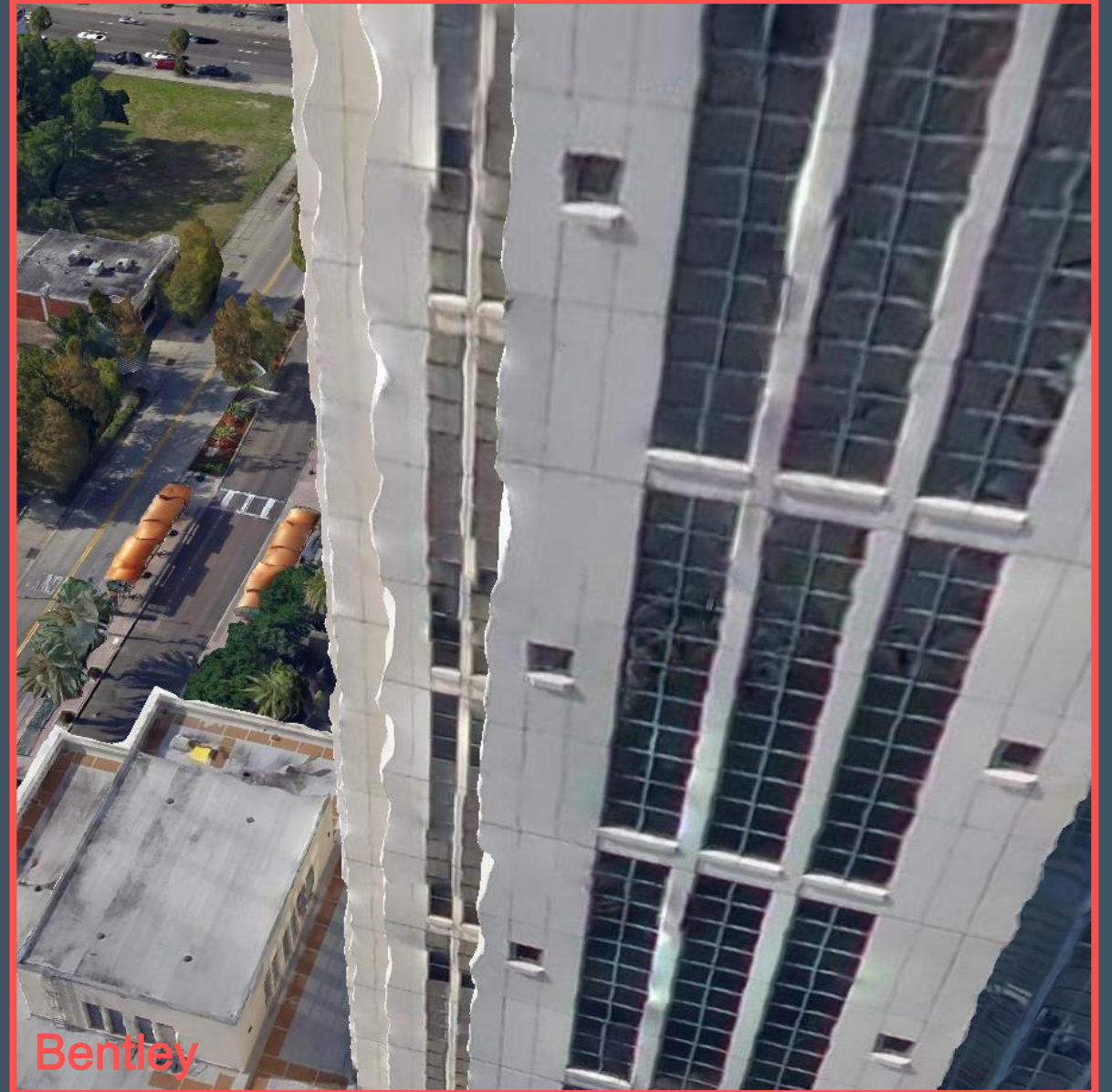
Disclaimer

The enclosed product information is shared with its audience to provide an understanding of Skyline's current expected direction, roadmap or vision and is subject to change at any time in Skyline's sole discretion. **Skyline does not commit to develop the future features, functions and products discussed in this material.** The audience of this material should not factor any future features, functions or products into its current buying decision since there is no assurance that such future features, functions or products will be developed. When and if these future features, functions or products are developed, they will be generally available for licensing by Skyline.

Edges



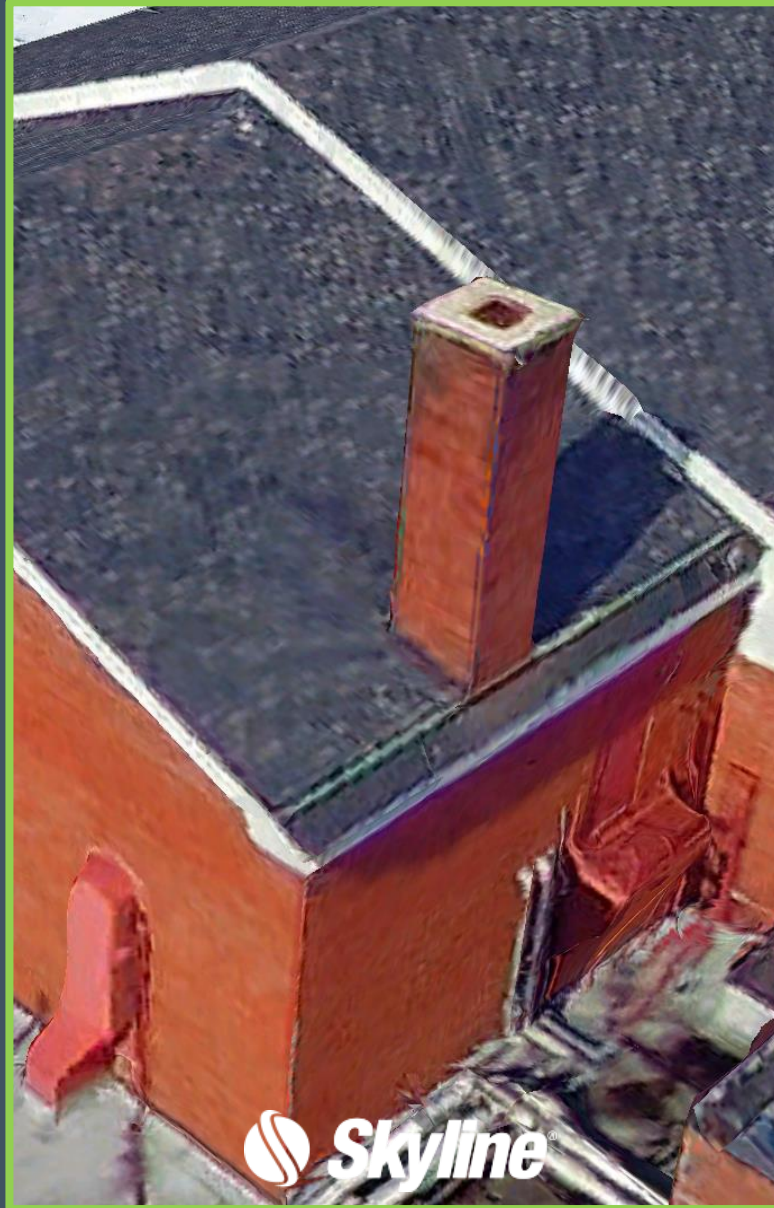
Edges



Edges



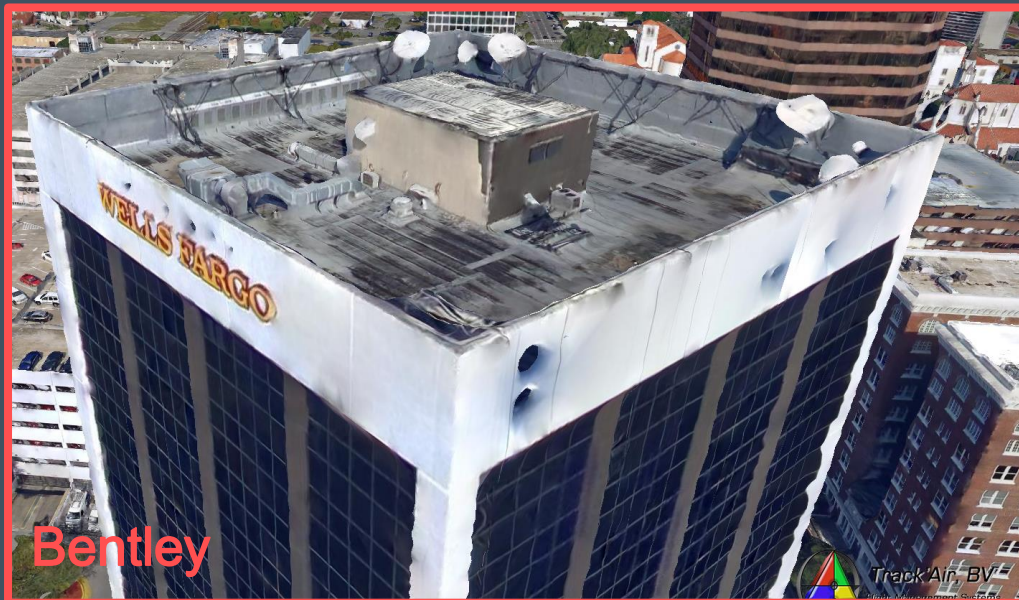
Edges



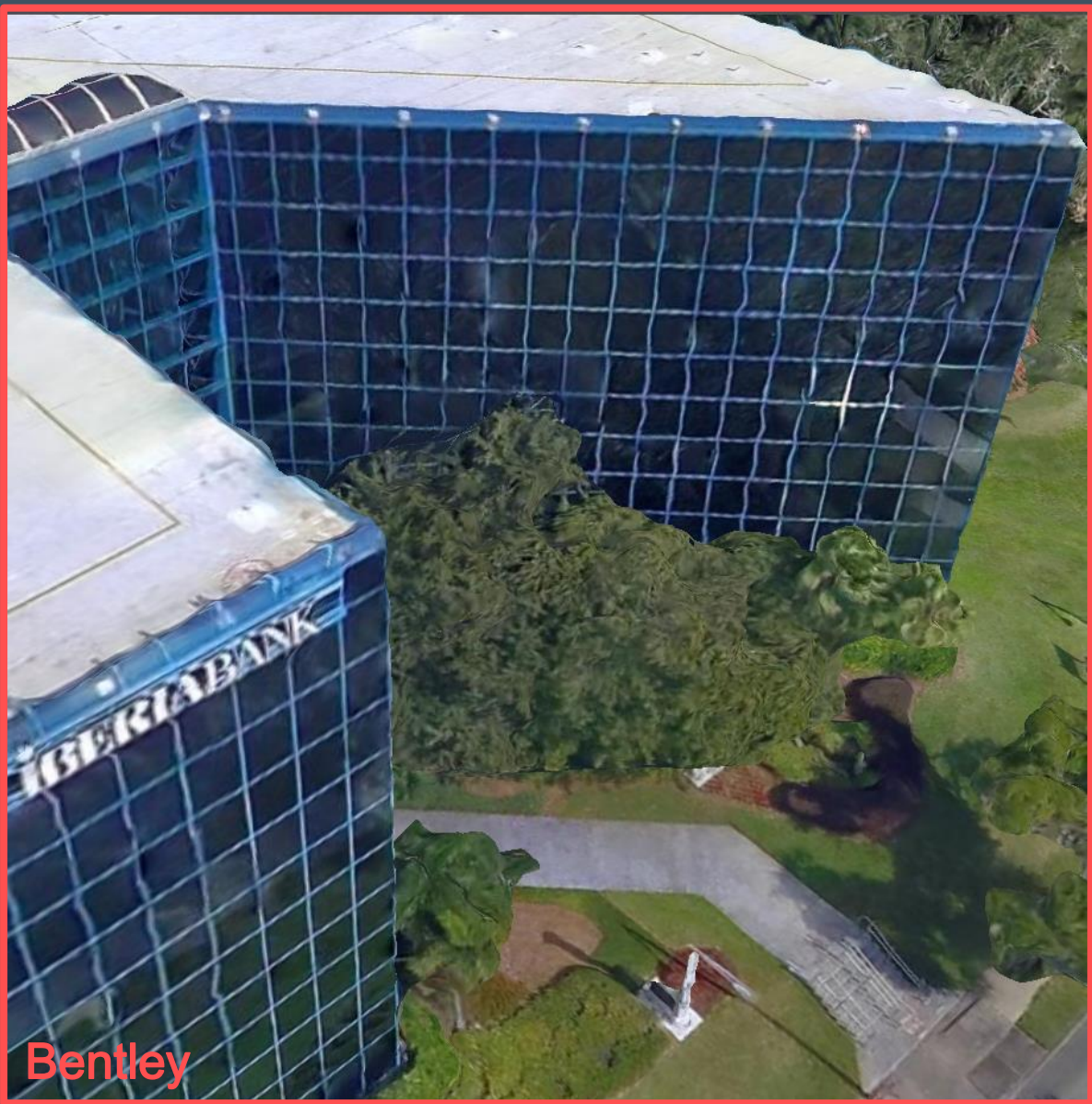
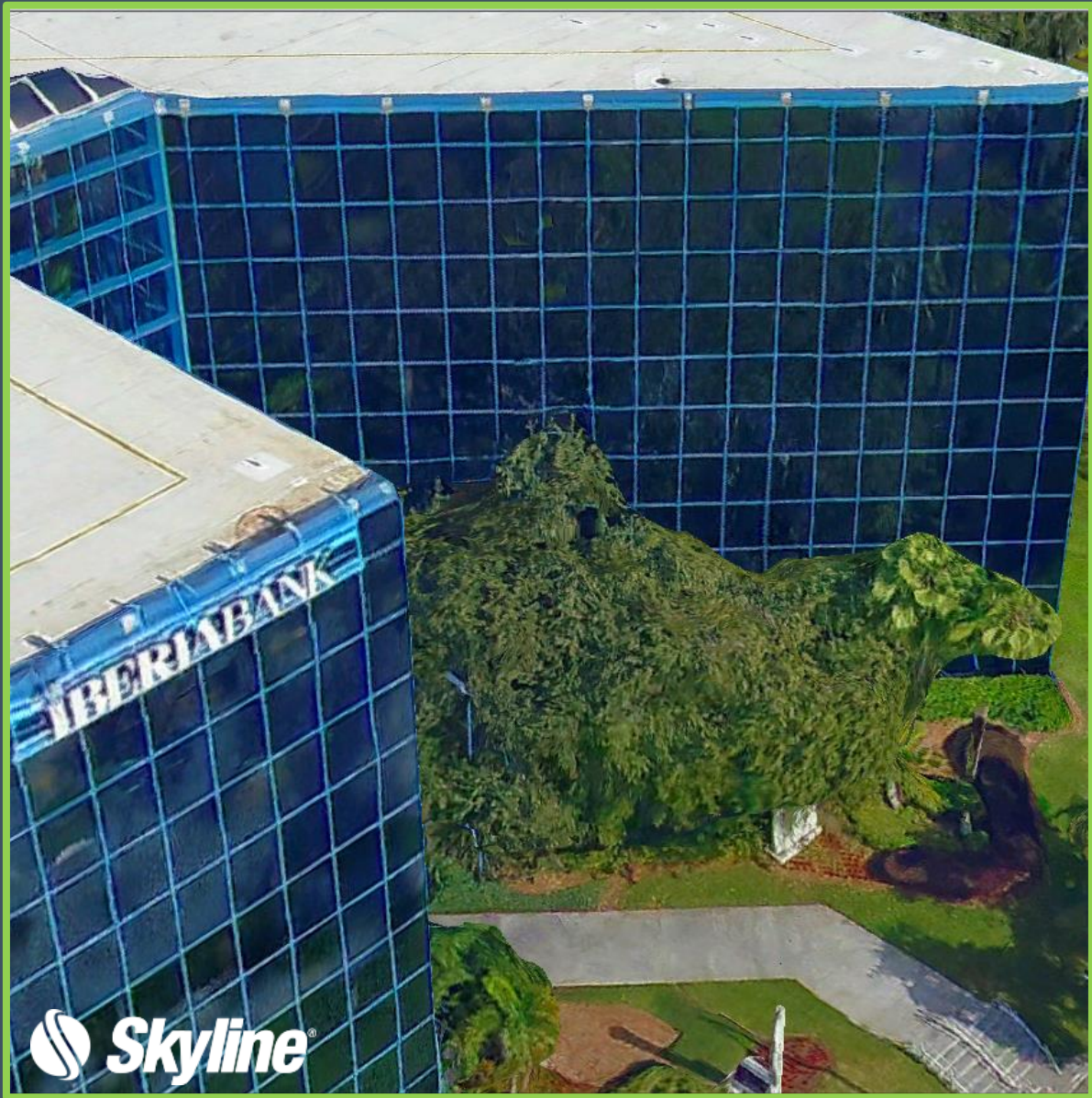
Thin Walls



Thin Walls



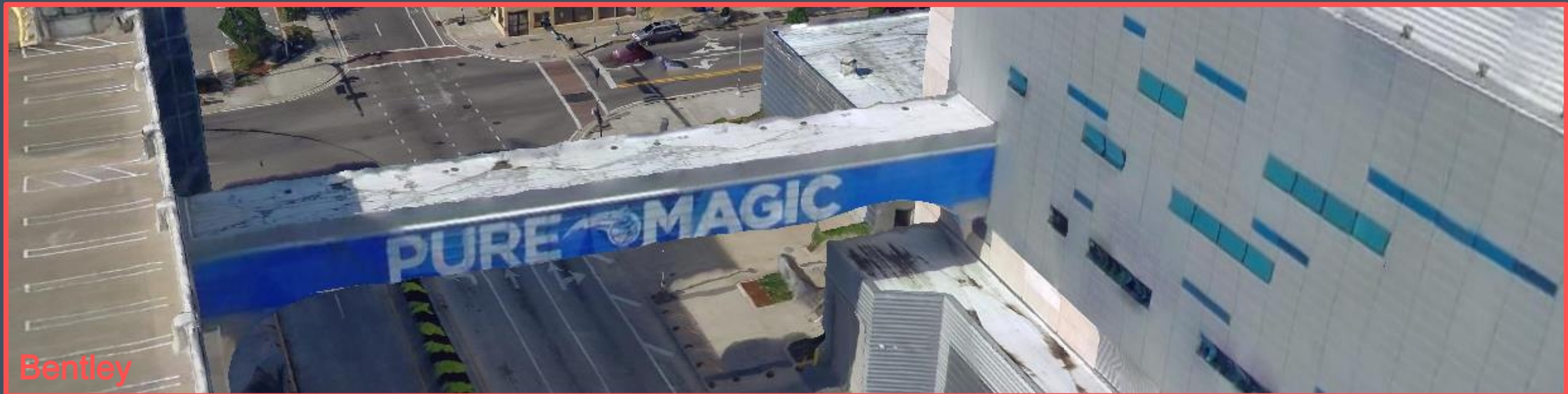
Glass Facades



Model Completeness



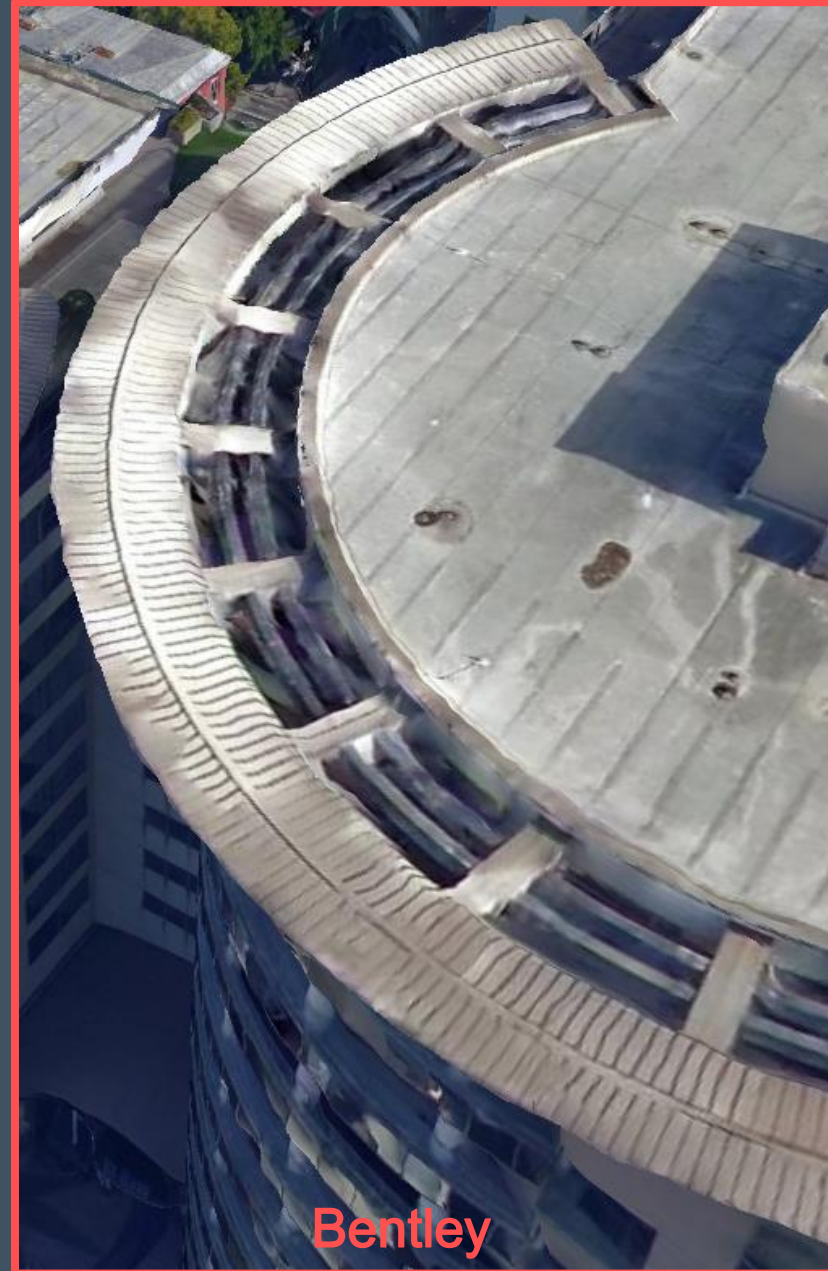
Model Completeness



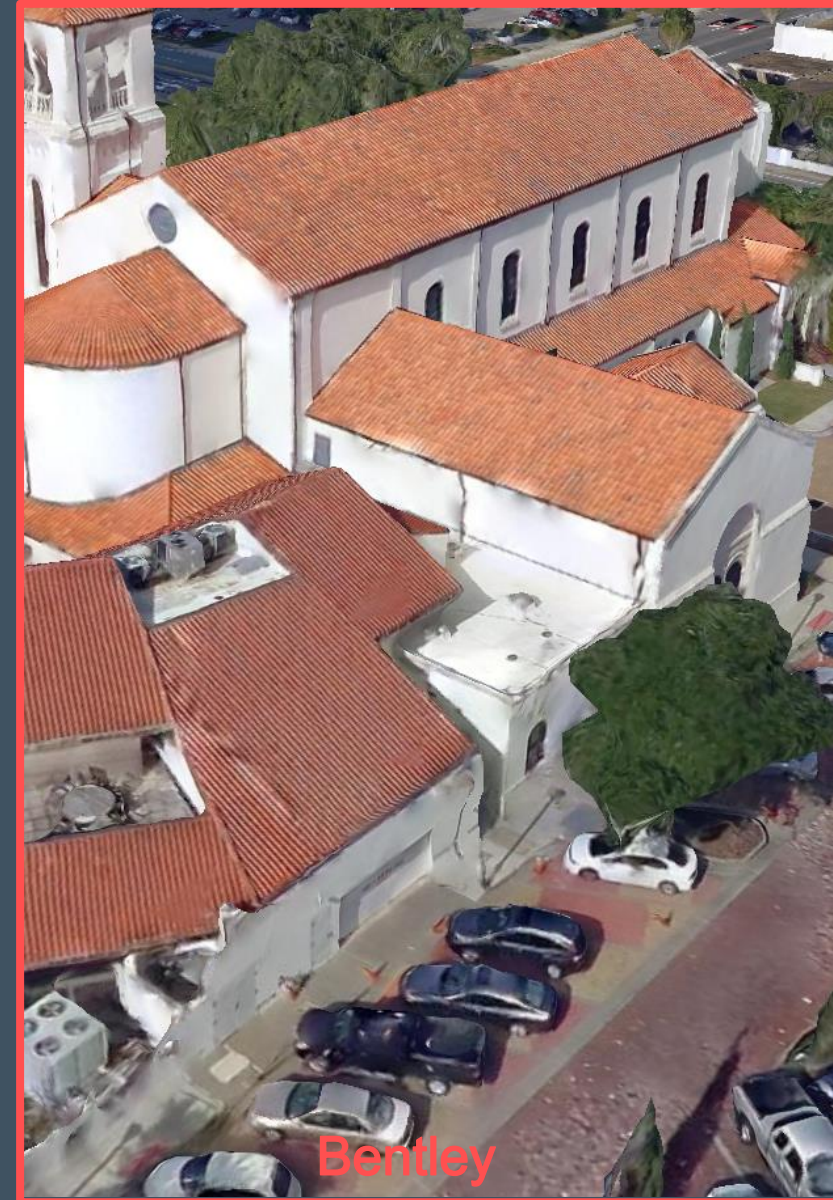
Complex Roof



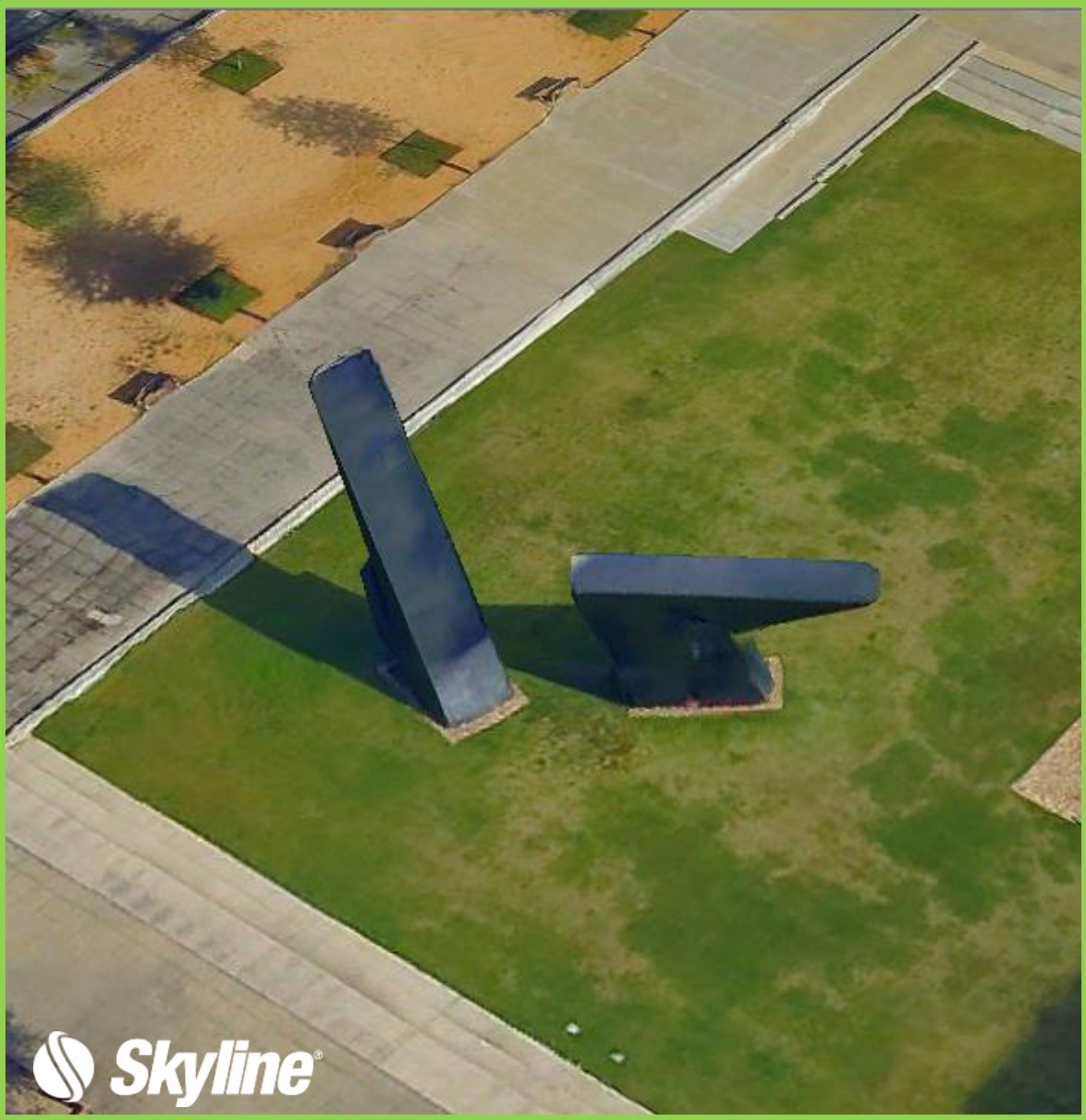
Complex Roof



Complex Roof



Small Feature Details



Small Feature Details



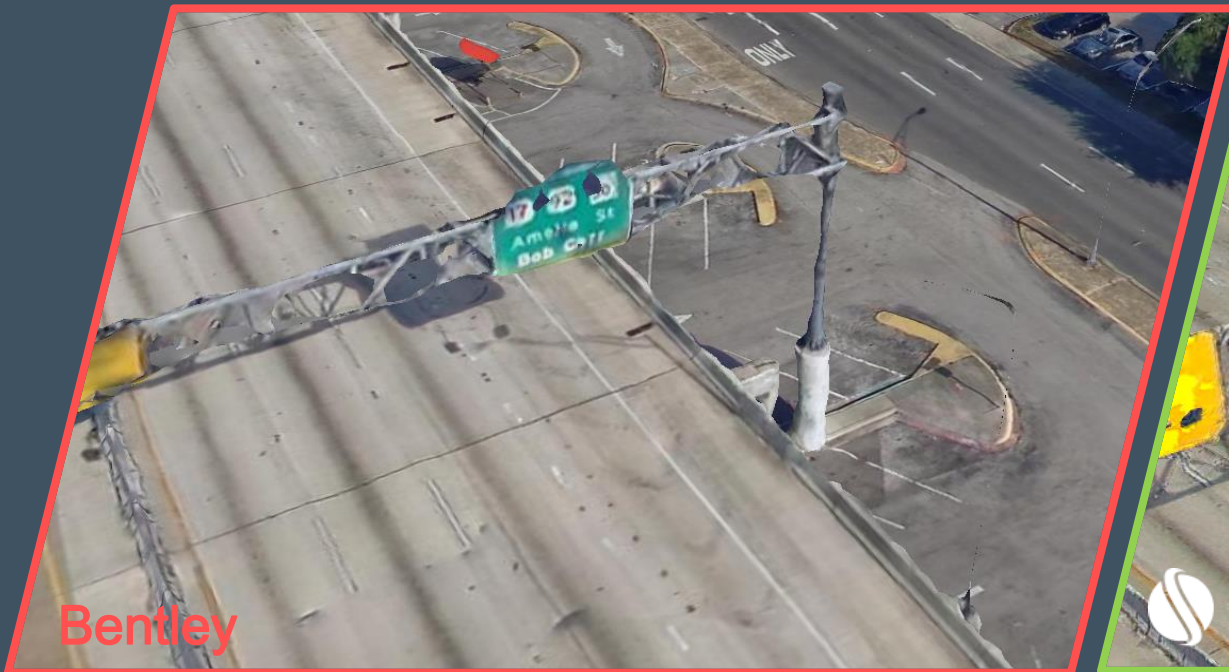
Fine Details



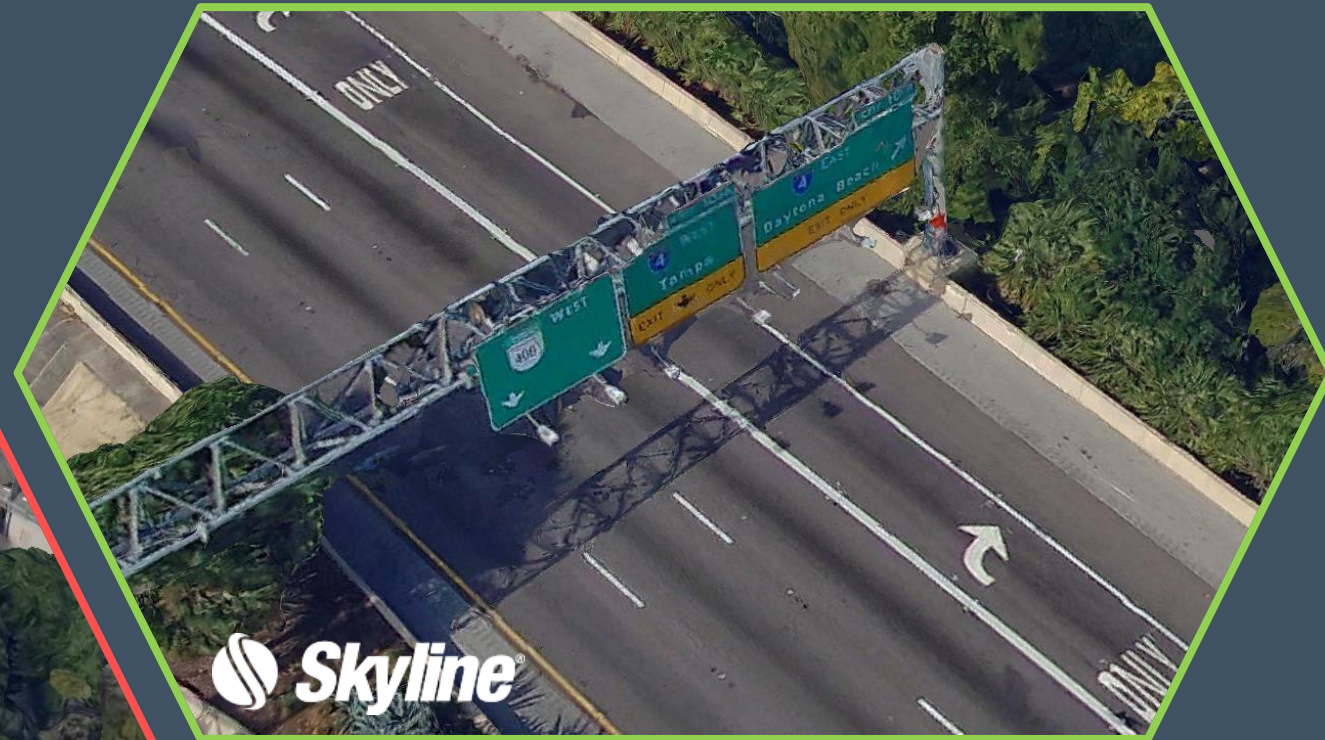
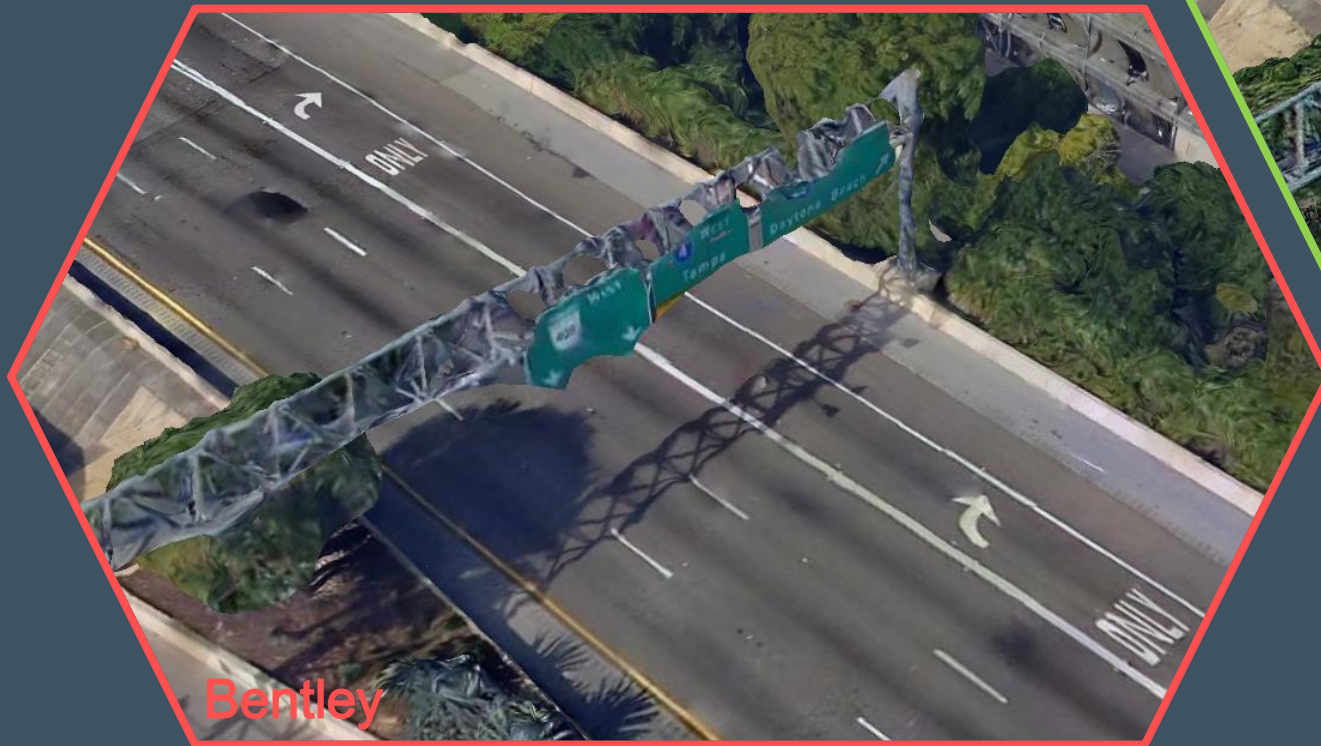
Fine Details



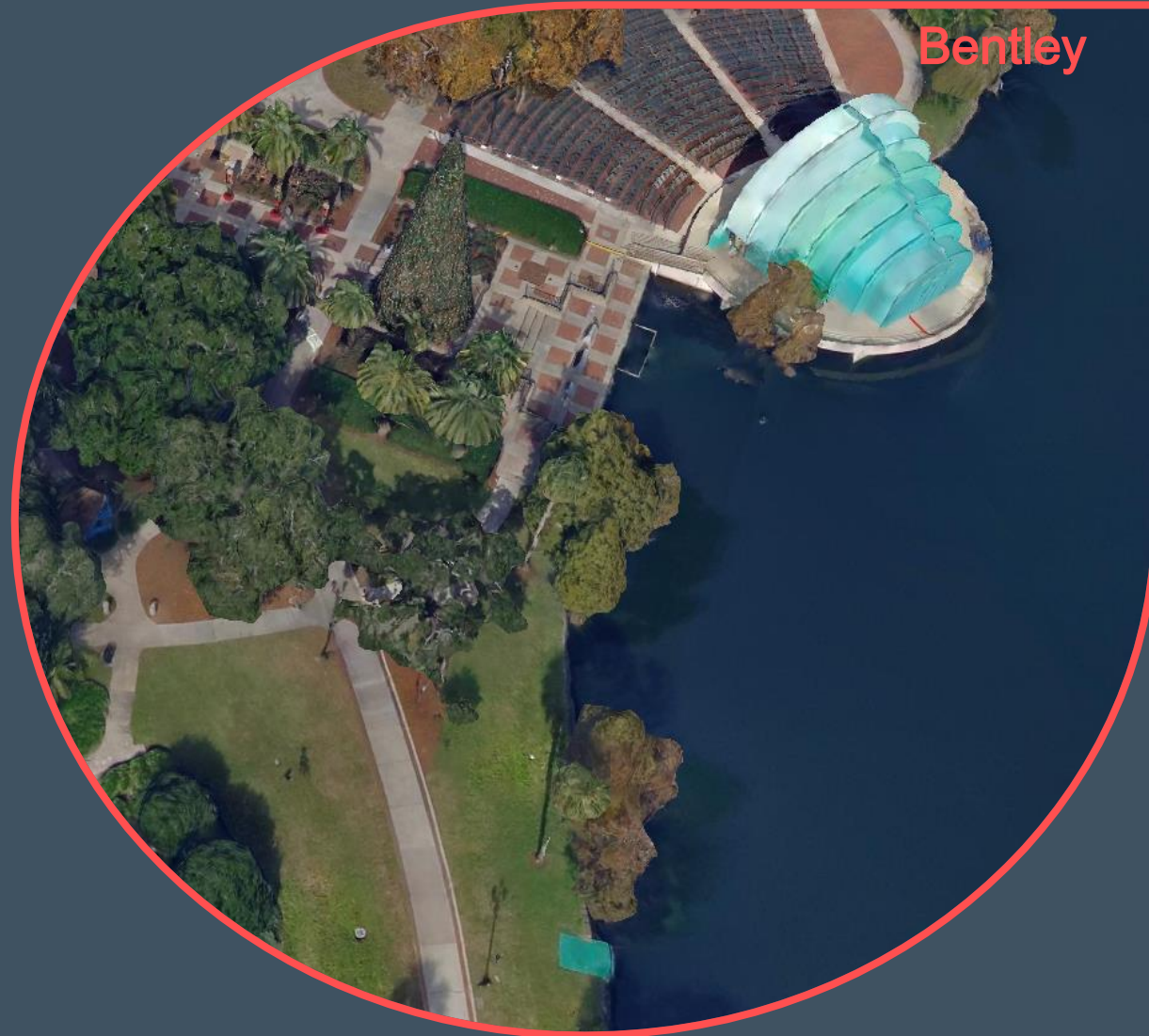
Fine Details



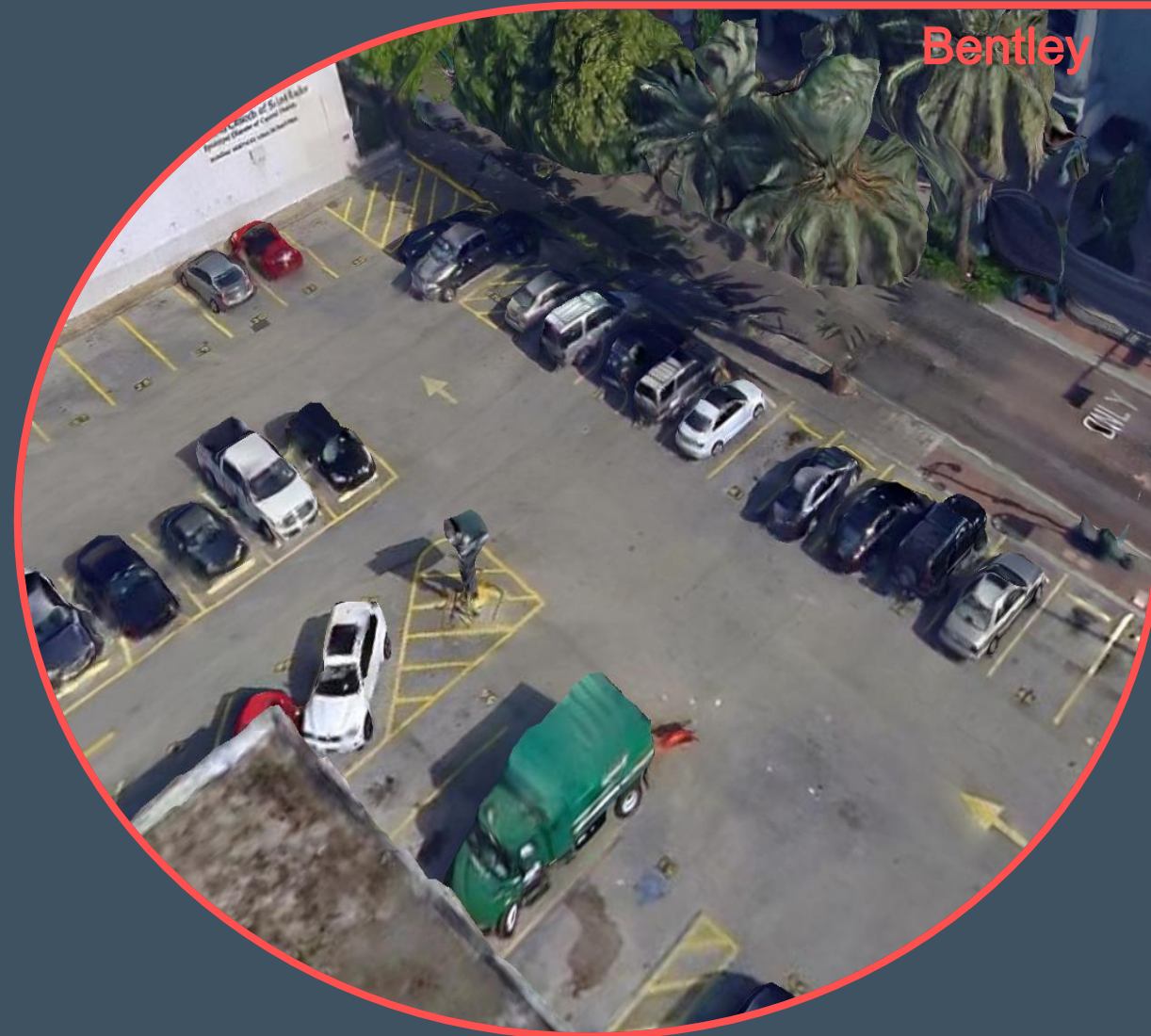
Fine Details



Trees and Water



Trees and vehicles





Data Compared:
Orlando, FL – Resolution: 5 Cm

Data Provider:
LeadAir Inc.

Date:
20-Jul-2017

Skyline PhotoMesh:
<http://www.skylineglobe.com/sg7/TerraExplorerWeb/TerraExplorer.html>

Pix4D
<https://sketchfab.com/models/68b7b7861d5a493ba92a3164df9f0fde>

Bentley (Acute3D)
http://d3h9zulrmcj1j6.cloudfront.net/Orlando_3MX/App/index2.html#%2F

