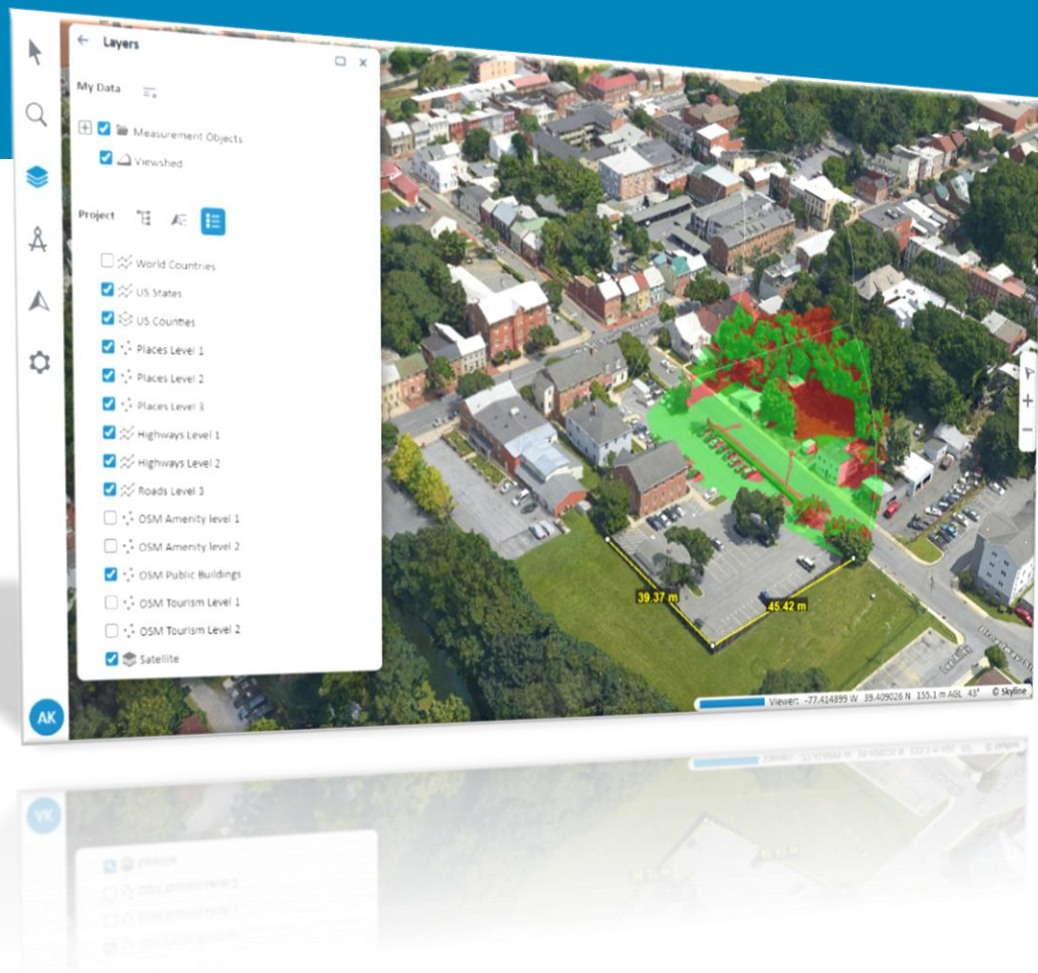
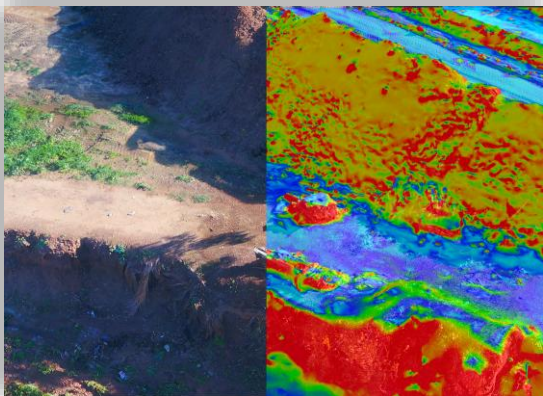


# SkylineGlobe Server And TerraExplorer Fusion Release Notes v8.2.1





- SkylineGlobe Server and TerraExplorer  
Fusion 8.2.1 Stability and Bug Fixes
- SkylineGlobe Server 8.2
  - Database Management and Upgrades
  - Security Enhancements
  - Performance Improvements
  - Expanded Interoperability and Device Support
- TerraExplorer Fusion 8.2
  - Mobile Device Support
  - Viewshed Query Enhancements
  - Expanded Language Support
  - Stability and Bug Fixes
  - Enhanced Developer Tools

## Stability and Bug Fixes

- Resolved an issue that, in certain scenarios, blocked SGS 8.2 from installing on clean machines.
- SkylineGlobe Server now initializes properly after upgrading from 8.1.0 to 8.2.1, even when the latest Microsoft Visual C++ Redistributable is not preinstalled.
- Improved support for 4K displays: Navigation sensitivity adjusted to appropriate levels and tooltip offset corrected.
- TerraExplorer Fusion now correctly identifies device type on touch-enabled laptops/PCs and does not default to mobile mode.
- Resolved issue where Google 3D Tiles failed to render when opened with the project.
- Removed incorrect error message shown during viewshed preview creation.

## Database Management and Upgrades

- **New Database Upgrade Tool:** Facilitates the upgrade of the SGS catalog database across versions, ensuring data integrity and simplifying migrations.
- **Optimized Reports & Messages Database:** Enhancements to the database structure and query performance accelerate reporting processes, reducing system load and improving responsiveness.

## Security Enhancements

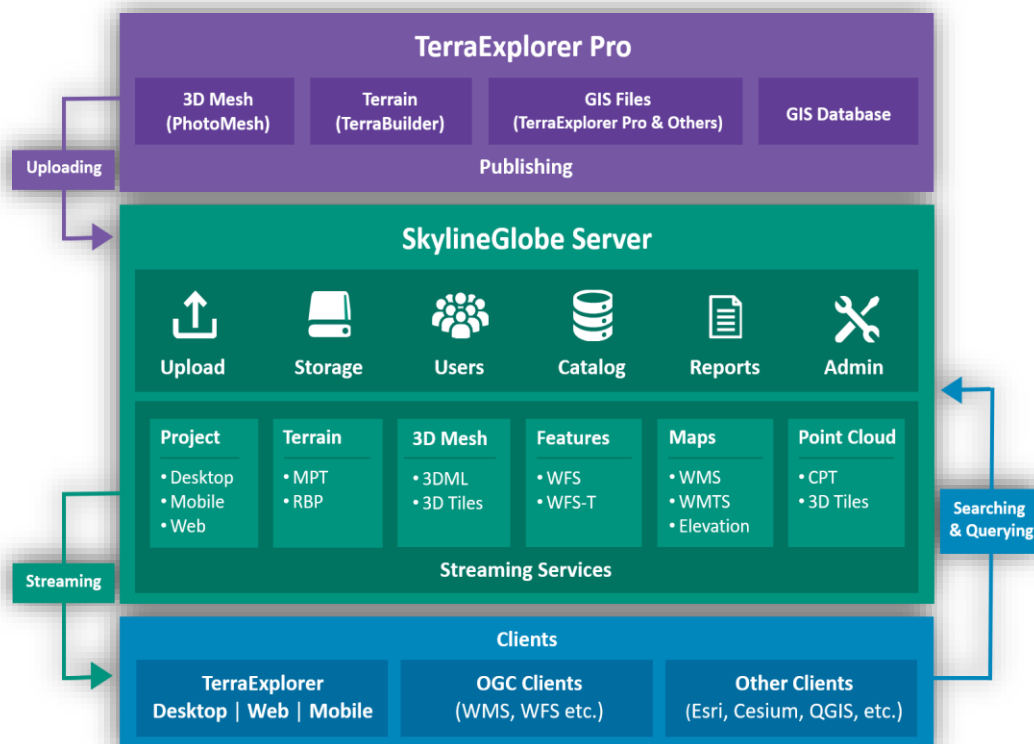
- **SSL Support for PostgreSQL:** Added the ability to securely connect to PostgreSQL databases using SSL certificates, enhancing data protection and encryption.
- **Access Token for API Requests:** Introduced option to attach access token to every network request, providing an additional security layer for API interactions.

## Performance Improvements

- **Faster Photo Uploads in Photo Inspector:** Optimized processes for large-scale photo uploads, ensuring smoother processing and reduced upload times.

## Expanded Interoperability and Device Support

- **WMTS Support for ATAK/WinTAK:** Added compatibility with ATAK/WinTAK for seamless streaming of Lat/Lon globe layers to tactical applications.
- **Enhanced Mobile Access:** Improved support allows TerraExplorer Fusion users to access login and Load Layer pages directly for their mobile devices.

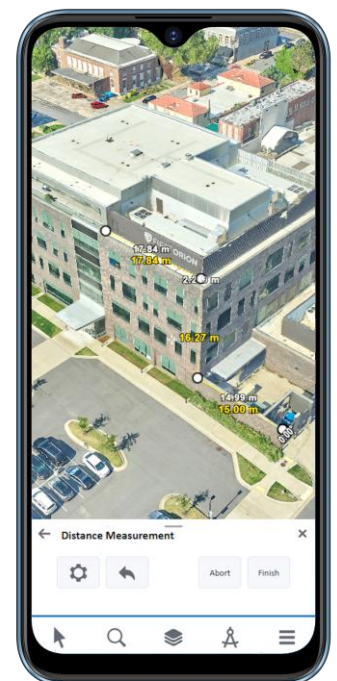
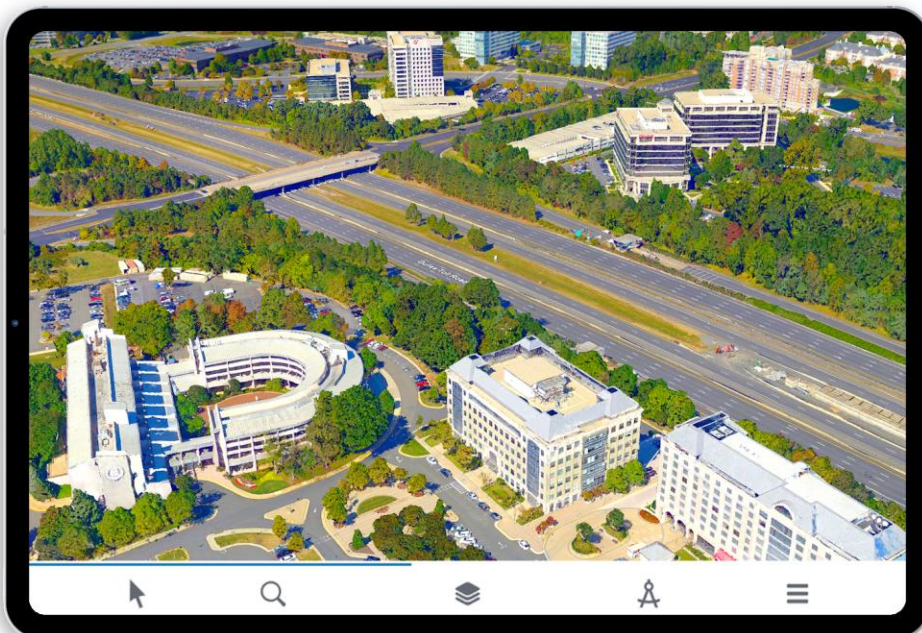




## Mobile Device Support

With the introduction of mobile device support in TerraExplorer Fusion v8.2, you can now access robust 3D visualization and analysis tools on your smartphone and tablet.

- **Mobile Compatibility:** Full support for Android and Apple devices ensures seamless integration across mobile platforms.
- **Optimized User Interface:** A redesigned GUI for mobile enhances usability with an intuitive and responsive experience.
- **Feature Parity with Desktop:** Most functionalities from the Viewer and Plus versions are now accessible on mobile. Exceptions include viewshed analysis, volume measurement, and environment settings adjustments.
- **My Location (GPS):** Quickly zoom to your current location for improved spatial orientation and mapping.



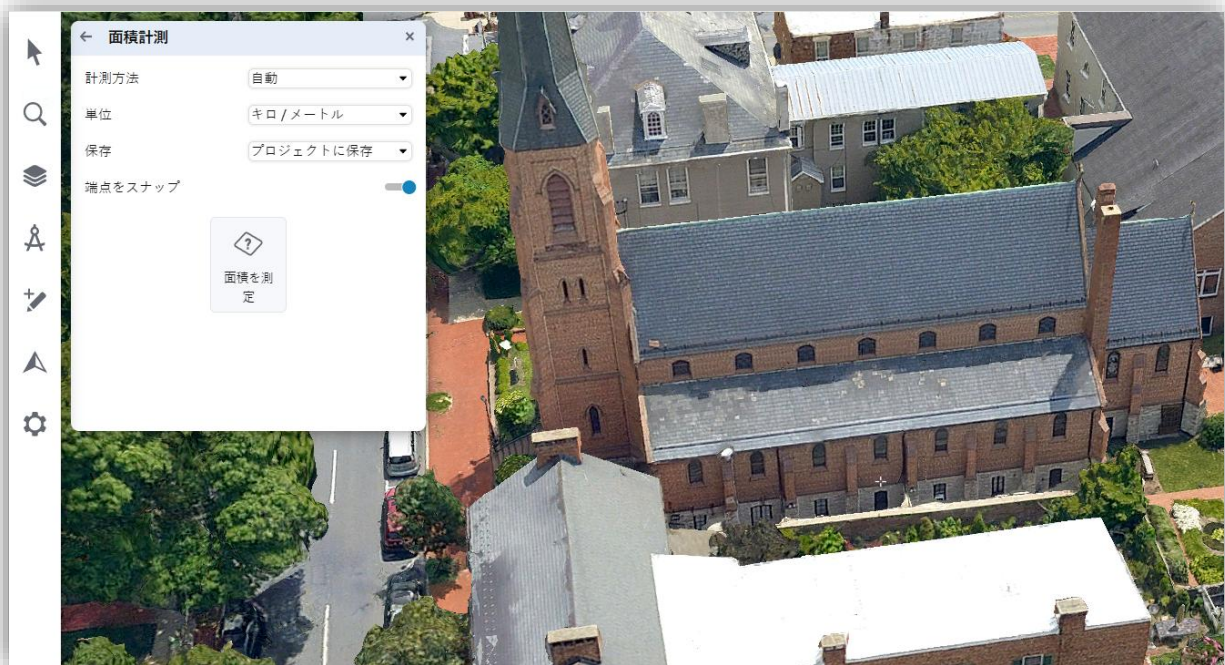
## Viewshed Query Enhancements

The Viewshed Query tool features improvements that provide greater flexibility and precision in visibility analysis, boosting the tool's effectiveness for strategic planning and decision-making:

- **Extended Query Range:** Supports queries up to 8 km (5 miles) with maintained accuracy.
- **Click-to-View Feature:** Click on any result point to visualize the direct line of sight, improving spatial understanding and analysis.

## Localization

TerraExplorer Fusion now supports additional user interface languages, including: English, French, German, Korean, Hebrew, Norwegian, Spanish, Japanese, and Traditional Chinese.



## Enhanced Developer Tools

- **Expanded API and URL Options:** Broadened capabilities for automation and flexibility in development.
- **New Interactive Tutorial:** Helps developers integrate TerraExplorer Fusion's core functionalities.
- **Customization:** Additional options for customizing user experience and streamlining workflows.

## Stability and Bug Fixes

- **Performance Optimizations:** Enhanced general performance for increased responsiveness and efficiency.
- **Bug Fixes:** Addressed various user-reported issues, improving stability and reliability.



# SKYLINEGLOBE SERVER REQUIREMENTS

## Hardware Requirements

System Memory	8 GB RAM (16 GB or more recommended)
Processor	4 cores (8 or 16 cores recommended)

## SkylineGlobe Server

Operating System	Windows Server 2016 / 2019 / 2022 (64-bit)
User Privileges	Administrator privileges required for installation and configuration
Additional Software	Microsoft IIS8.5, IIS10 with Net 4.8 and ASP.Net

## SkylineGlobe Server Edge

Operating System	Windows 10 / 11 , Windows Server 2019 / 2022
User Privileges	Administrator privileges required for running the service

## SkylineGlobe Server for Linux

Operating System	Ubuntu
Additional Software	Wine v7 and up, .Net 4.8

[Check out our SkylineGlobe Server knowledge base](#)



[www.skylinesoft.com](http://www.skylinesoft.com)

Copyright © 2025 Skyline Software Systems Inc. All rights reserved. Skyline, SkylineGlobe, the Skyline logo, TerraExplorer Fusion and the TerraExplorer Fusion logo are trademarks of Skyline Software Systems Inc.



# TERRAEXPLORER FUSION REQUIREMENTS

## Desktop

Supported Browsers	Google Chrome, Microsoft Edge, Mozilla Firefox, Apple Safari
System Memory	8 GB RAM (16 GB recommended for 4K render mode)
Video Card	4 GB (8 GB recommended for 4K render mode)

## Mobile

Operating System	Android and iOS
Supported Browsers	Google Chrome, Apple Safari
System Memory	8 GB RAM

[Check out our TerraExplorer Fusion knowledge base](#)



[www.skylinesoft.com](http://www.skylinesoft.com)

Copyright © 2025 Skyline Software Systems Inc. All rights reserved. Skyline, SkylineGlobe, the Skyline logo, TerraExplorer Fusion and the TerraExplorer Fusion logo are trademarks of Skyline Software Systems Inc.

