

## SkylineCloud Services

SkylineCloud provides a set of software, production, infrastructure, data and billing services to help you optimize your 2D and 3D geospatial data production and hosting. With SkylineCloud, users can easily subscribe to packages that include all or parts of these services to start enjoying the Skyline suite of products. SkylineCloud is built on top of the Amazon Web Services (AWS) infrastructure to provide reliable and fully scalable computing, storage and streaming resources.

### Production

Fully automated service to run PhotoMesh projects can produce 2D, 3D and multi-spectral outputs. Generate dense point clouds with detailed color information, true orthophotos, and 3D mesh models in range of formats.

### Hosting

Based on SkylineGlobe Server, SkylineCloud Hosting provides a fully managed service to upload, store, convert and stream nearly unlimited 2D and 3D spatial data.

### Skyline Atlas

Ready-to-use collection of high resolution data layers in selected geographic areas, in cooperation with local data partners. Integrate Skyline Atlas's premium data with your own proprietary data to create immersible, high-resolution 3D maps.

### Subscription

Based on a secured commercial billing system, this service significantly shortens the product development cycle & makes it easy to create a tailored online store for your customers, offering production, hosting, and data packages.



# Production Services

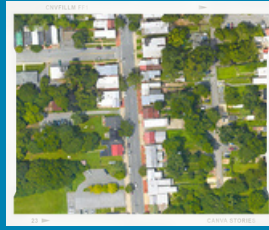
Range of output formats supported to ensure maximum interoperability



3D Mesh



Point Cloud



Orthophoto



DSM



DTM



## Automated

Fully automated service to run PhotoMesh projects, using REST API to manage the PhotoMesh production. Input data is read from and then pushed back to customer cloud storage (AWS/Google Cloud/Azure etc.).



## High Quality

Generates high resolution multi-band orthophotos, DSM/DTM, point clouds, & 3D mesh models that faithfully reproduce even small-scale details such as cars, trees, fences, and walls - all with advanced color balancing, edge & surface enhancement, & high-quality texturing. Wide range of output formats supported...



## Scalable and Fast

Custom packages are available with up to thousands of fuser machines. Packages can easily be upgraded, extended or disabled, so you can match your production capabilities to your processing requirements, ensuring fast production even for demanding projects, without paying more than you need.

# Hosting Services

Enable sharing of geospatial data with range of viewers using SGS as a service



## Store & Secure

Customers can store masses of 2D and 3D geospatial data for their end users in a secure, access-controlled environment. Each customer has a private virtual site that completely isolates their users' data and allows management/administration of the data layers and site users.



## Reliable & Scalable

SkylineCloud is built on top of the Amazon Web Services (AWS) infrastructure to provide reliable and fully scalable computing, storage and streaming resources. SkylineCloud offers global coverage using AWS's Global Accelerator and smart caching mechanism to speed up streaming performance.