

# TerraExplorer for Web

## Release Notes

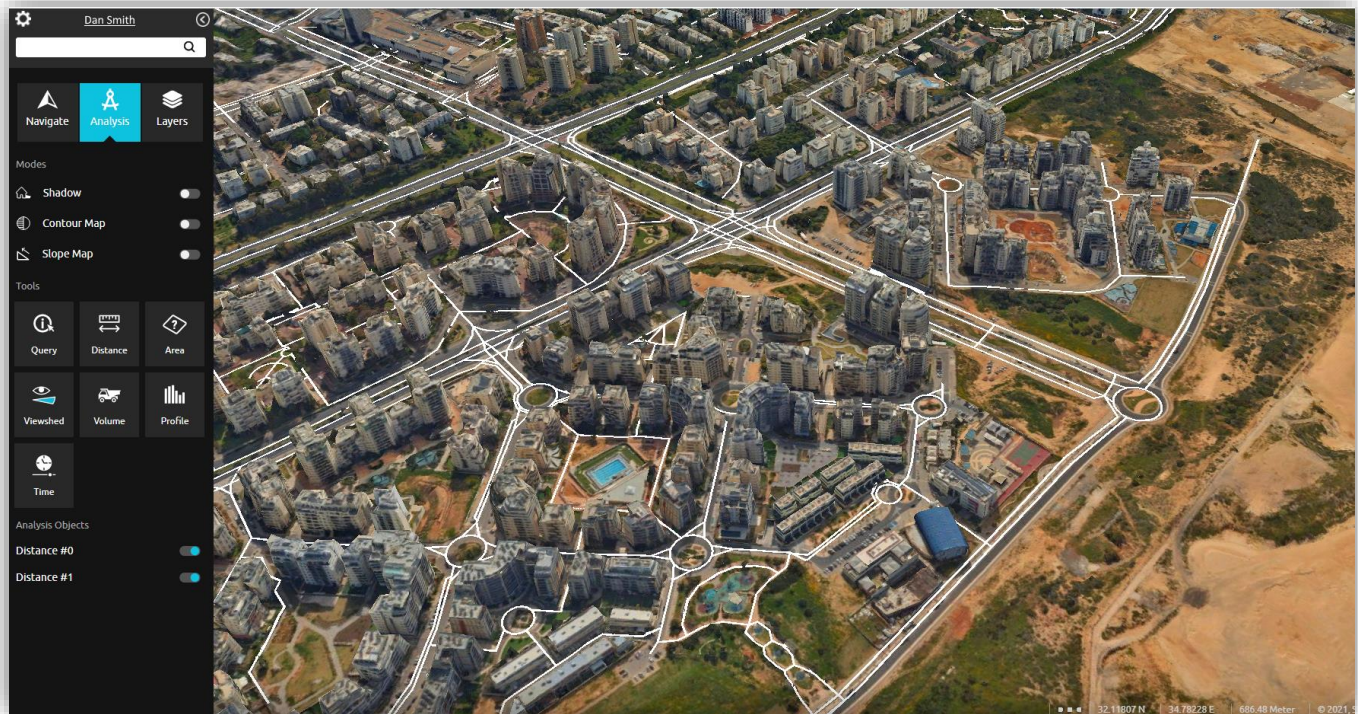
### V 7.3.1





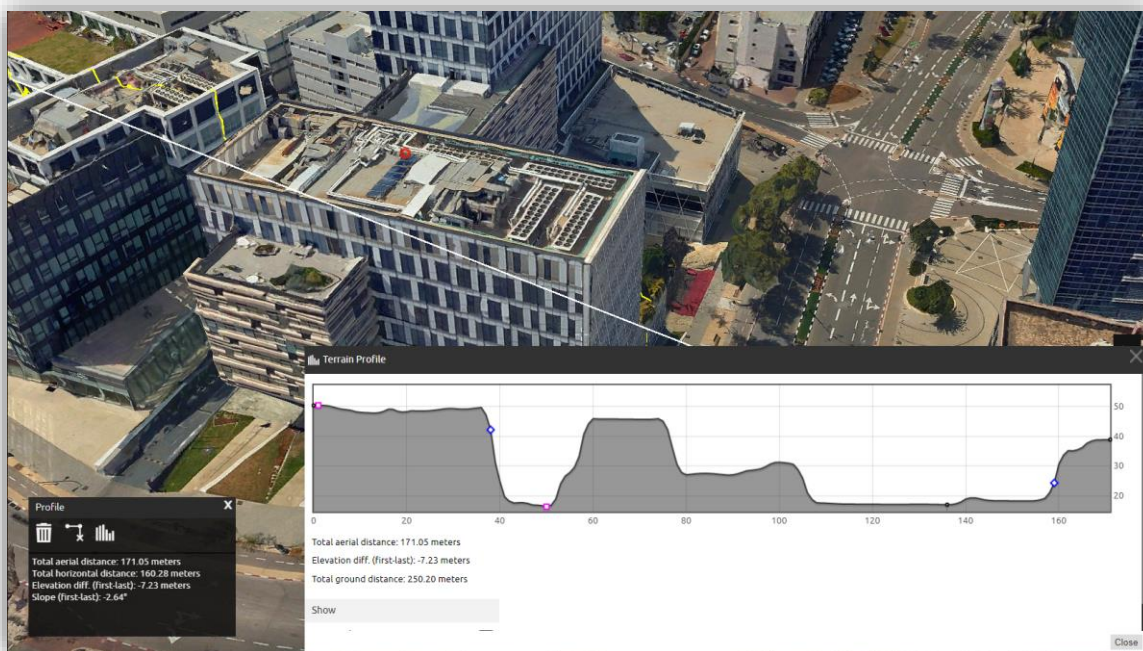
# OVERVIEW

**TerraExplorer for Web (TE4W)** is a lightweight 3D GIS viewer that enables you to view and analyze high-resolution, stunningly realistic SkylineGlobe 3D content in a web browser, without any plug-ins. Building on standard Cesium support for imagery, elevation and KML layers, TerraExplorer for Web can also display most of your spatial databases including 3D city layers and feature layers. TerraExplorer for Web integrates smoothly with the entire Skyline product line for easy access to all your data – from photo-realistic, geographically accurate terrain databases created in TerraBuilder to PhotoMesh’s high-resolution, textured, 3D mesh models. Based on HTML5/WebGL standards, TerraExplorer for Web provides support for multiple platforms and browsers (Windows, Mac, Linux, and selected mobile devices, Chrome, Firefox, Edge, Internet Explorer and more).



## TerraExplorer for Web

- Security updates
  - Upgraded JQuery and JQuery-Migrate libraries to fix Cross-Site Scripting (XSS) vulnerability
  - Fixed XPath vulnerability
- New setting to zoom to location of user's device. This option is available for desktop and mobile devices
- Resolved issues affecting display of 3DML:
  - Preserve TerraExplorer Desktop's "Replace Terrain With" setting
  - Restored proper transparency support for published 3DML created from models feature layers
  - Corrected issue causing large gaps between certain mesh layers and the base terrain
  - Improved efficiency of modify terrain and mesh ground mechanisms, thus reducing the number of requests being sent and enhancing overall performance
  - Resolved issue affecting display of certain BIM models



- Fixed several bugs affecting feature layers:
  - Tooltips now display properly when hovering over polylines
  - Corrected issue causing polylines to appear broken and discontinuous
  - Fixed bug causing display of purple and black lines when hovering or selecting
  - Corrected issue affecting visibility of feature layer text labels
  - Resolved issue causing altitude changes when zooming in and out of some layers
  - Restored support for loading of complex geometries
- Additional bug fixes and improvements
  - Resolved bug causing part of point cloud to disappear when zooming in
  - Improved efficiency of modify terrain and mesh ground mechanisms, thus reducing the number of requests being sent and enhancing overall performance
  - Resolved issue that resulted in text labels appearing under the terrain when camera was tilted
  - Fixed bug that caused all layer tab buttons to disappear when KML settings were configured to only hide the “Display Load Layers” button
  - Fixed issue affecting display of labels’ attribute popup message

# REQUIREMENTS

Operating System Windows / Linux / MacOS / Android / iOS

System Memory 2 GB RAM (4 GB or more recommended)

Processor 4 cores (8 cores recommended).

Browser

- Windows: Chrome, Firefox
- MacOS: Chrome, Safari
- Linux: Chrome
- Android: Chrome
- iOS: Safari

For additional information, check out the [SkylineGlobe Server](#) section and [TerraExplorer for Web](#) section of our knowledge base.



[www.skylinesoft.com](http://www.skylinesoft.com)

Copyright © 2022 Skyline Software Systems Inc. All rights reserved. Skyline, SkylineGlobe, the Skyline logo, TerraExplorer and the TerraExplorer logo are trademarks of Skyline Software Systems Inc.

