

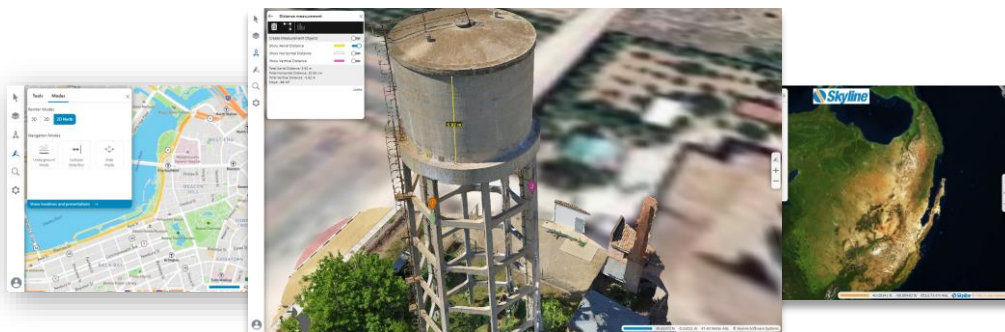
POWERFUL 3D GEOSPATIAL VIEWER

Terraexplorer Fusion is a powerful 3D geospatial viewer that enables you to view and analyze high-resolution, stunningly realistic 3D content right in your web browser with no download or installation required.

TerraExplorer Fusion enables viewing of most online layers and objects published to SkylineGlobe Server, performing powerful measurements and analysis operations, and dynamically exploring the 3D World via presentations which merge a custom flight path with distinct displays of the project. Built on HTML5/ WebGL/WebAssembly standards, TerraExplorer Fusion ensures compatibility with multiple platforms and browsers.

The new TerraExplorer Fusion is based on TerraExplorer Desktop source code converted to WebAssembly. This conversion technology provides exceptional compatibility, enabling most of the original TerraExplorer Desktop code to run as-is in web browsers with numerous advantages, including support for nearly all the layers and objects supported by the Desktop version, consistent API for code sharing, and powerful performance.

TerraExplorer Fusion serves as a central component within the TerraExplorer family of products, integrating seamlessly with TerraExplorer for Desktop and TerraExplorer for Mobile. With a shared technology and API at their core, data published to SkylineGlobe server is ready for consumption by all TerraExplorer clients. This unified approach also ensures that extensions and tools can be developed once and then easily shared across all the TerraExplorer platforms.





EXPLORE DATA

TerraExplorer Fusion supports a comprehensive range of online geospatial layers streamed from SkylineGlobe Server and other online services. These include imagery, elevation, 3D mesh, point cloud, and feature layers, along with various types of objects and effects:

MEASURE AND ANALYZE

Zoom in and search the 3D World to gain new perspective. Increase understanding and improve decision making with a set of powerful tools for 3D World measurement and analysis.

EXPLORE DATA IN DIFFERENT COORDINATE SYSTEMS

TerraExplorer Fusion provides a versatile and robust platform for data exploration across various coordinate systems. Its features include on-the-fly reprojection of layers, support for both Lat-Long and planar projects, along with automatic grid shift file integration.

PRESENTATION TOOL

Dynamically explore the 3D World via presentations included in projects published from TerraExplorer Desktop to SGS. These presentations merge a custom flight path with distinct displays of the project.



EXPLORE DATA

- Terrain (SGS MPT / WMS)
- GIS feature (SGS / WFS)
- Imagery (SGS / WMS / WMTS / MAPBOX)
- Elevation (SGS / WMS / WMTS)
- 3D mesh (3DML / 3D TILES)
- 3D models (XPL, DAE, GLB, OBJ)
- Point cloud (SGS CPT)
- KML/KMZ
- Objects and dynamic objects
- Effects and animation

MEASURE AND ANALYZE

- Query tool
- Distance and area measurement
- Volume analysis
- Terrain profile
- Viewshed analysis
- Shadow analysis
- Contour and slope maps
- Comparison tool
- Spatial queries
- Attribute table

CREATE CUSTOM WEB APPLICATIONS

Unlock a world of customization with TerraExplorer Fusion (TEF). This platform allows the creation of web applications tailored to your user groups, with extensive localization and configuration options. By leveraging the comprehensive TerraExplorer API, you can expand TEF's capabilities with custom tools. Visual appearance can also be tailored to fit your specific branding requirements using custom style files. Full GUI customization is possible, by embedding TEF within your web application.