

## YUNEEC – Mapping and Inspection Software: H520E + Skyline’s PhotoMesh™ and TerraExplorer™ 2D/3D Analytics Software

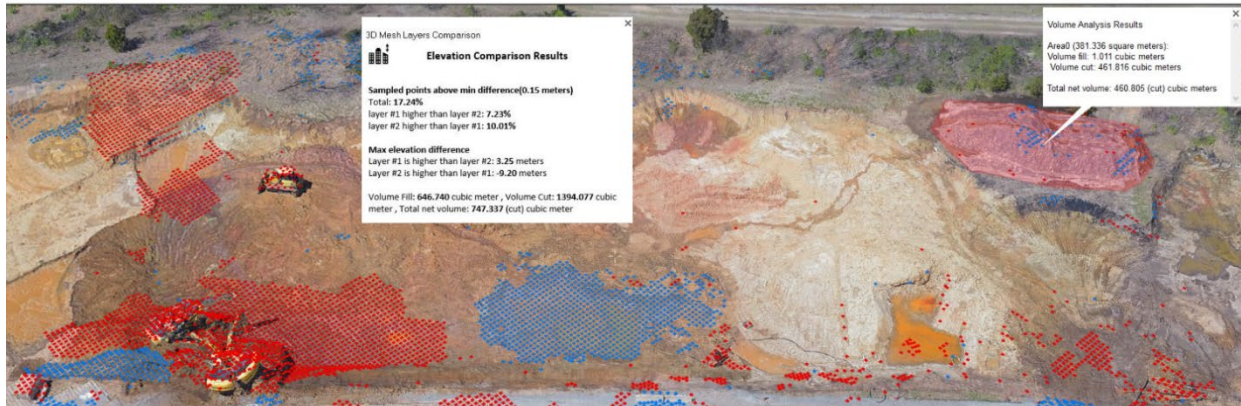
Mapping, measurements, or digital twin modeling delivering actionable data for your business or service anywhere, anytime.



H520E Hexacopter



Digital Twin with Measurements



Advanced Change Detection and 3D Analytics in Construction

- PhotoMesh™ automatically converts the H520E or H520E-RTK oblique and nadir images to high-resolution, textured, 3Dmesh models (3DML), True-Orthophotos (with no building lean)
- Digital Surface Models, Digital Terrain Models and Photogrammetric Point Clouds
- Stunning 3DML output with Edge detection/extraction for sharp/crisp images
- Color registration of mesh for more consistently vibrant images
- Incorporate LiDAR Data to enhance under vegetation, alleys, and thin features.
- Imports and exports to industry standard file formats to allow model enhancements.
- Outputs: 3DML, 3D Tiles, SLPK/I3S, OSGB, OBJ, DAE, Orthophoto, DSM, DTM, and Colorized LAS
- TerraExplorer™ Plus for editing and analyzing geo-referenced projects from 3D terrain, 3D mesh, Lidar, BIM, raster and feature databases
- Specifically designed for the YUNEEC H520E/RTK E90X camera to produce the highest precision

YUNEEC PhotoMesh Plus	YUNEEC PhotoMeshGX1000 Plus
Single computer license	Multiple CPU license for scaling large projects & fast processing
1 Concurrent Project	3 Concurrent Projects
Unlimited Processing and/or images	1,000 GigaPixels (about 45,000 images)
Annual recurring payment	One time fee, then credit purchase model
YUPMUNP	YUPMGX1KP